



M22 MAGAZINE FED SHOTGUN USER'S MANUAL

READ THE INSTRUCTIONS AND WARNINGS IN THIS MANUAL CAREFULLY BEFORE USING THIS FIREARM

FIREARM OWNER'S RECORD

MODEL: _____ SERIAL _____ DATE _____ PURCHASED _____

**IMPORTANT WARNING: INFORMATION AND SPECIFICATIONS CONTAINED
IN THIS MANUAL MAY CHANGE WITHOUT NOTIFICATION**

1) NEVER ALTER OR MODIFY YOUR SHOTGUN

This shotgun was produced under specific manufacturer guidelines by craftsman with years of experience under their belt and should not be changed under any circumstances. Altering the trigger, mechanical components, or safety mechanism, or using any other products other than those provided in the original box is **NOT RECOMMENDED** by the manufacturer, and could result in death, bodily harm, or compromising your or others' safety. Any alteration made to the firearms also voids the factory warranty.

2) PROPER CARE, MAINTENANCE, AND STORAGE

It is essential that regular maintenance and cleaning be performed to maintain the accuracy and function, and maximize the longevity of your firearm. Before cleaning **ALWAYS** perform a safety check to make sure that the firearms are unloaded before cleaning. Always be sure your weapon is unloaded before you leave the shooting range and check before using it again. Store your weapon and ammunition in different containers to prevent accidents.

A GUN OWNER'S RESPONSIBILITY

As the firearm owner, you have the responsibility and obligation to ensure that any shooting activities are safe for you and everyone else. This requires your commitment to carefully read, fully understand, and exercise the principles of proper firearm safety at all times.

DISCLAIMER

THE FIREARM IN WHICH THESE SAFETY RULES APPLY IS SOLD UNDER THE EXPRESSED CONDITIONS THAT THE MANUFACTURER ACCEPTS **NO LIABILITY** IN PART OR WHOLE FOR BODILY INJURY, DEATH, OR PROPERTY DAMAGE FROM:

- CARELESSLY HANDLING THE FIREARM.
- USING DEFECTIVE, IMPROPER CALIBER, HAND-LOADED, NON-STANDARD, OR RELOADED AMMUNITION
- INADEQUATE MAINTENANCE OF THE SHOTGUN RESULTING IN CORROSION OR DAMAGE.
- NEGLIGENCE OF MALFUNCTIONS.
- RESALE IN CONTRADICTION OF ANY APPLICABLE LAWS OR REGULATIONS.
- ALTERING OR CONVERTING THE FIREARM'S ORIGINAL AESTHETIC, FUNCTIONING MECHANISM, ACCESSORIES, OR MECHANICAL CONFIGURATION.

- FAILURE TO UNDERSTAND, ADHERE TO, AND FOLLOW THE RULES OF FIREARMS SAFETY WHEN USING OR HANDLING THE FIREARM.
- OR ANY OTHER CIRCUMSTANCES OUTSIDE THE MANUFACTURER'S DIRECT OR IMMEDIATE CONTROL.

FIREARM SAFETY

IMPORTANT WARNING: IT IS IMPORTANT FOR YOU TO RECEIVE PROPER TRAINING FROM A COMPETENT FIREARMS INSTRUCTOR OR AUTHORITY BEFORE BEGINNING TO SHOOT OR WHEN HANDLING A FIREARM.

IMPORTANT WARNING: FAILURE TO ADHERE TO THE RULES OF FIREARM SAFETY CAN RESULT IN SERIOUS INJURY, DEATH, OR DESTRUCTION OF PROPERTY.

1) COMPLETELY READ AND UNDERSTAND YOUR OWNER'S MANUAL GUIDELINES BEFORE USING YOUR FIREARM.

You should fully understand the function of all of the components and mechanics of the firearm. Before you remove the firearm from the box, thoroughly read the owner's manual on how to properly carry, handle, load, unload, and store your firearm. Know the rules of proper gun safety and exercise them at all times because failure to do so may result in death or injury to yourself and others. Because it is impossible to list every firearms situation or scenario, be aware that certain circumstances may require additional safety rules unique to a particular situation.

2) ALWAYS LEARN THE SPECIFIC MECHANICAL AND HANDLING CHARACTERISTICS OF YOUR SHOTGUN.

All firearms are different thus you need to understand how to properly carry, use, and handle each one according to its specific guidelines. Before using any firearm, one must completely familiarize themselves with the type of firearm and its specific safe handling procedures for loading, unloading, and carrying.

NEVER

- Give the shotgun to any person who has not thoroughly familiarized himself or herself with all of the information, safety rules and warnings in the owner's manual

3) ALWAYS KEEP THE FIREARM UNLOADED UNTIL YOU ARE READY TO USE.

Firearms should be kept unloaded when not in use. Whenever you pick up a firearm, immediately engage the safety device and remove the magazine to visually inspect the chamber and confirm that it is clear. Always unload all ammunition from the chamber and remove the magazine; 1) after shooting, 2) before storing, 3) before holstering, 4) before maintaining, and 5) before handing it over to another person.

NEVER

- Leave a loaded gun unattended, propped up against a surface, or out of your hands.
- Assume a firearm is unloaded, even if you used it last. Always check to make sure that there is no ammunition and the chamber is clear.
- Load a cartridge into the chamber until you are ready to fire.
- Carry or transport your firearm with live ammunition in the chamber.
- Pass a firearm to another person or accept a firearm from another person, until the cylinder or action is open and you have personally checked that the weapon is completely unloaded.
- Haul a loaded firearm openly or in a carrying case.
- Never Transfer or hand a loaded firearm to someone else.

4) ALWAYS KEEP YOUR FINGER OFF THE TRIGGER UNTIL YOU ARE READY TO SHOOT.

When holding the firearm be sure to rest your finger on the trigger guard and along the side of the gun.

NEVER

- Touch the trigger until you are ready to fire.
- Engage in horseplay while handling a firearm.
- Rely on the safety devices of the gun. Mechanical safeties are never foolproof and can wear out and malfunction overtime. Remember to always handle all firearms using proper gun safety guidelines.

5) ALWAYS KEEP THE GUN POINTED IN A SAFE DIRECTION.

When holding a gun, if you are not ready to shoot, point your barrel away from someone or something valuable to avoid injuries or damage to property in case of an accidental discharge.

NEVER

- Point your firearm at anything you don't intend to shoot.
- Use a firearm under the influence of alcohol, drugs or any other substances that may impair your judgment, skills, or physical abilities.
- Target shoot or hunt with a firearm when you are fatigued or too tired to operate the firearm safely.
- Use your firearm if you have an illness or disability that could compromise your judgment and the safety of yourself or others.

6) ALWAYS TREAT YOUR FIREARM AS IF IT IS LOADED.

A gun is a mechanical device and is not foolproof. Remember that any firearm safety mechanism can fail, even if the safety is engaged.

NEVER

- Shoot the gun unless you know you have the proper ammunition.
- Use hand loaded, non-standard or reloaded ammunition.
- Fire ammunition that exceeds manufacturer's recommendations and specifications.
- Use old, soiled or damaged ammunition.
- Use ammunition which does not feed reliably in your particular firearm as it may malfunction at a critical juncture.

7) ALWAYS COMPLY WITH ALL LOCAL, STATE, AND FEDERAL LAWS THAT GOVERN THE OWNERSHIP, STORAGE, CARRYING, AND IN USE OF FIREARM

Do not harm any person or damage any public property. Never commit any criminal activity with your firearm.

NEVER

- Store or hide a loaded firearm.
- Leave your firearms where unauthorized access from other individuals can occur.
- Allow access to individuals who do not understand or follow the rules of proper gun safety.
- Leave an unsecured firearm in a bed, drawer, closet, or in a vehicle that could allow access to children or other unauthorized individuals.
- Allow children under the age of 18 access to any firearms without close supervision and proper firearm safety training.

8) ALWAYS HANDLE MALFUNCTIONS WITH EXTREME CARE AND PATIENCE

If your firearm fails to fire the cartridge, keep the firearm in a safe direction and put the safety on, wait for sixty seconds. After waiting, slowly pull the charging handle and dispose of the cartridge safely.

NEVER

- Vandalize any public or private property by using it as a target

- Poach a game animal out of season.
- Kill any animal you don't intend to eat.

9) ALWAYS KNOW YOUR TARGET AND WHAT IS BEYOND.

Before you pull the trigger be sure of your target and what is behind it. Shoot only in areas that have approved backdrops such as a shooting range, or backstops such as a hillside or berm. Also, know how far your shot will travel in case you miss the target or the bullet ricochets.

NEVER

- Fire in the direction in which there are people.
- Shoot directly upwards or at a high angle of elevation. Firing at or into the air can have enough energy to travel long distances and accidentally injure or kill someone.
- Shoot across a highway or other roadway.

10) ALWAYS WEAR EYE / EAR / BODY PROTECTION.

Gases and debris can cause injury so it is very important that one wears protective gear to preserve their hearing and eyesight. Also, while in the field wear at least 1000 square inches or more of blaze orange so that you can be visible by others.

NEVER

- Discharge a firearm in a poorly ventilated area.

IMPORTANT WARNING: POSSIBLE LEAD EXPOSURE CAN OCCUR WHEN DISCHARGING FIREARMS IN A POORLY VENTILATED AREA, CLEANING THE FIREARM, OR HANDLING AMMUNITION. LEAD AND ITS COMPONENTS IS A SUBSTANCE KNOWN TO CAUSE BIRTH DEFECTS, REPRODUCTIVE DETERIORATION/IMPAIRMENT, CANCER, OR OTHER SERIOUS HEALTH CONDITIONS AND INJURY. ALWAYS HAVE ADEQUATE VENTILATION AT ALL TIMES AND WASH YOUR HANDS AND OTHER CONTACT AREAS THOROUGHLY AFTER EACH EXPOSURE.

11) ALWAYS HANDLE WITH EXTREME CARE IF YOUR GUN FAILS TO FIRE WHEN THE TRIGGER IS PULLED.

If the ammunition doesn't fire when you pull the trigger, STOP! and remember to always keep the firearm pointed in a safe direction. Keep your face away from the breech, then put the safety on, carefully open the action, unload the firearm and dispose of the cartridge safely. Always keep in mind that anytime there is a shell in the chamber, your firearm is **LOADED** and ready to fire. Even if you tried to shoot and the firearm did not fire, always treat it as if it could still discharge.

12) ALWAYS TREAT THE FIREARM AS IF IT WAS LOADED, EVEN IF THE SAFETY IS POSITIONED CORRECTLY AND KEEP YOUR FINGERS AWAY FROM THE TRIGGER WHEN LOADING AND UNLOADING

A gun is a mechanical device and is not foolproof and is subject to wear and tear overtime. Always keep your fingers away from the trigger when you are loading and unloading. If the manual safety proves to be ineffective for any reason, danger of an unintentional discharge exists, the weapon is then must be immediately unloaded and restricted from further use. Contact info@u235armory.com so that gun can be inspected and repaired by an authorized gunsmith.

REMEMBER: THAT ANY FIREARM SAFETY MECHANISMS CAN FAIL, EVEN IF THE SAFETY IS ENGAGED. YOU SHOULD ALWAYS ASSUME THAT A FIREARM IS LOADED WHEN HANGLING IT.

13) ALWAYS KEEP YOUR SHOTGUN IN THE SAME MECHANICAL AND STRUCTURAL CONFIGURATION AS IT WAS WHEN IT WAS MANUFACTURED.

This shotgun was produced under specific manufacturer guidelines and should not be altered or changed under ANY circumstances. Performing conversions by altering the trigger, mechanical components, safety mechanisms, or using any other products other than those provided in the original box is NOT RECOMMENDED by the manufacturer, and could result in death, bodily harm, or compromising your safety or the safety of others. Any alteration made to the firearm also voids the factory warranty. Like any mechanical device it is subject to normal wear and tear from use. In order to maintain optimal safety and performance it should be periodically serviced.

You must regularly clean and lubricate your firearm to maintain its functionality, accuracy, safety and reliability. Always before cleaning or lubricating any firearm make sure that you perform a safety check to make sure that the firearm is completely unloaded prior to performing any routine maintenance. If for some reason your firearm does require repairing, please visit info@u235armory.com for contact information in regard to parts and repair services for your U235 Armory shotgun.

NEVER

- Alter, convert, or change your firearm from its original manufacturer's configuration

IMPORTANT WARNING: THIS FIREARM WAS DESIGNED TO FUNCTION PROPERLY IN ITS ORIGINAL CONDITION. THE MANUFACTURER WILL NOT BE HELD LIABLE OR LEGALLY RESPONSIBLE FOR ANY ALTERATION PERFORMED ON THE FIREARM AFTER IT LEAVES THEIR CONTROL. THIS INCLUDES ANY ADDITION OR SUBSTITUTION OF PARTS OR ACCESSORIES THAT ARE NOT MANUFACTURED BY DEFENCEPORT ANY CHANGES MADE TO FIREARMS IS SPECIFICALLY CONTRARY TO OUR INSTRUCTIONS AND WE EXPRESSLY DO NOT AUTHORIZE ANY CHANGES BE MADE AFTER MANUFACTURED. DO NOT JEOPARDIZE THE SAFETY OF YOURSELF OR OTHERS BY MAKING MODIFICATIONS TO YOUR FIREARM.

14) ALWAYS MAKE SURE THE BARREL IS CLEAR OF ANY OBSTRUCTIONS BEFORE SHOOTING.

Before loading always perform a safety check to make sure that there is no ammunition in the chamber or magazine. Examine the barrel for any obstructions or debris such as excess lubricant, dirt, or grease. If the bore is obstructed it can cause increased pressure causing the barrel to bulge or burst during use. Always use a cleaning rod and patch to remove any residues or obstructions in the barrel. Be familiar with your firearm. If the noise or recoil seems muffled or weak then **STOP!** And proceed to unload your firearm and check to make sure nothing is lodged in the barrel.

NEVER

- Try to shoot out an obstruction by loading another shell and firing.

SERIAL NUMBER OF THE FIREARM

The serial number is located on various parts of the shotgun. Each serial number is specific to that shotgun and is used for identification and registration. It is recommended that you record your serial number in your manual and keep the information in a secured location.

MANUFACTURER'S RECOMMENDATION FOR INITIAL USE

As with all gas operated shotguns, a short "break in" period of a box or two of shells for reliable operation is required. It is recommended that loads over 1oz be used during initial use and "break in" to help with the future cycling of a wider range of available loads. Please note it is your responsibility as the retail user to ensure that before use, every part, fastener and accessory is tight before firing your M22 shotgun.

IMPORTANT CONSIDERATIONS FOR SELECTING AMMUNITION

There are many 3 inch and even some 23/4 shells on the market that are not designed for most semi automatic systems. Many of the heavier turkey loads and even some of the faster slugs are made to be handled only by shotguns specifically designed for those types of heavy loads and high pressures. Your shotgun is designed to run flawlessly on an extremely wide range of regular power, shot and slug loads, but not some of the high power loads that are available.

AMMUNITION RECOMMENDATIONS AND GUIDELINES

Your M22 is designed to give you a lifetime of use with a wide range of standard loads. The best performance, reliability and longevity is achieved by using shot/buck loads of 1.5 oz (50 grams, 656 grains) or less, and slugs less than 1600 feet per second if more than .75 oz (22 grams, 328 grains). Use of heavier, or faster loads may prove unreliable, and could greatly shorten the lifespan of your firearm. Overuse of ammunition that is outside of factory recommendations and if determined to be a contributing factor to failure or damage to your firearm will void your manufacturer's warranty. It is your responsibility to be reasonable when selecting the wide array of available shotgun ammunition.

LOADING THE SHOTGUN

- 1) First, point the shotgun in a safe direction. Remember, a safe direction means that the gun is pointed so that even if it were to go off, it would not cause injury, damage, or death. Always perform a safety check to make sure that the chamber is empty.
- 2) When the magazine is empty, the bolt catch lever holds the bolt open at the rear. Press the magazine release to remove the empty magazine and insert a loaded magazine. Remember to only use ammunition that is recommended by the manufacturer.
- 3) Push down the bolt catch lever with the thumb of the shooting hand and this will allow the bolt to move forward and chamber a round.

THE SHOTGUN IS NOW LOADED AND READY TO FIRE!

IMPORTANT WARNING: ALWAYS UNLOAD YOUR FIREARM IMMEDIATELY AFTER SHOOTING

RECOMMENDATIONS FOR CLEANING DURING USE

During use of your firearm, it may be necessary to clean the gas system from every 100-400 rounds depending on how much residue is deposited.

It is recommended that during this time that the parts and fasteners of the firearm including barrel nut are checked to make sure they have not become loose.

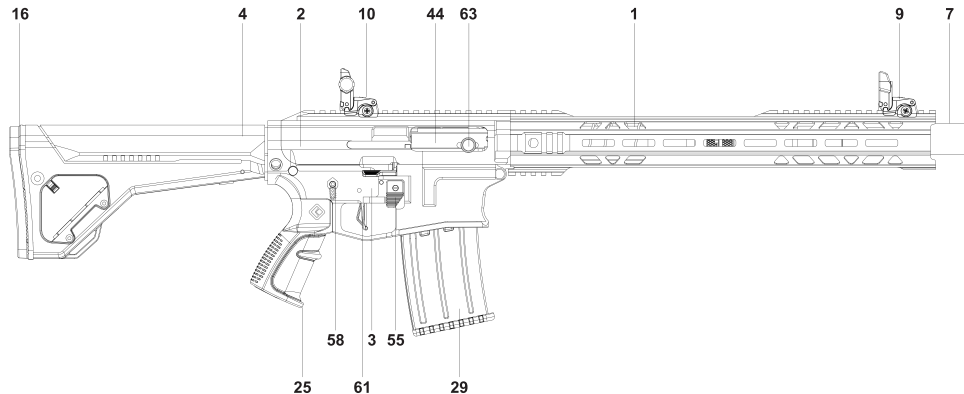
IMPORTANT WARNING

PLEASE NOTE: REMOVAL OF YOUR BARREL FROM THE RECEIVER IS NOT A REGULAR PART OF THE CLEANING PROCEDURE AND SHOULD ONLY BE DONE FOR REPAIR OR FOR CIRCUMSTANCES.

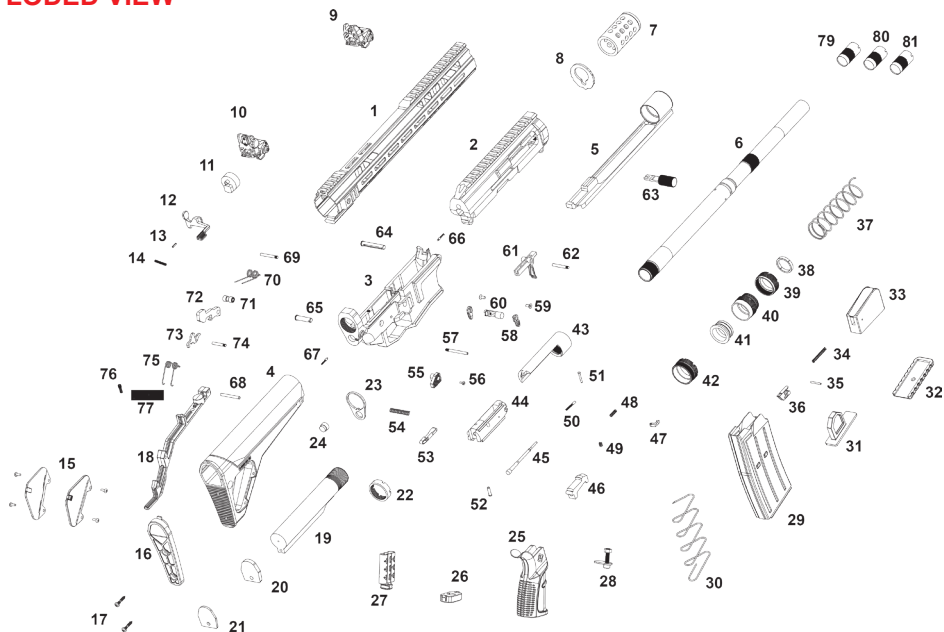
TO ACHIEVE A TORQUE VALUE OF 35 FT LBS YOU MUST SECURELY HOLD YOUR RECEIVER IN SOMETHING SUCH AS A BENCH OR TABLE VISE WHILE FIRMLY TIGHTENING THE BARREL NUT.

YOU CAN NOT ACHIEVE 35 FT LBS BY HOLDING THE RECEIVER IN ONE HAND WHILE TIGHTENING THE BARREL NOT WITH THE ORDER

DIAGRAM VIEW



16	Recoil Pad	10	Rear Sight	7	Barrel Shroud
2	Upper Receiver	9	Front Sight	58	Safety Selector
29	Magazine	61	Trigger	25	Pistol Grip
3	Lower Receiver	44	Bolt	55	Magazine Release Button
1	Handguard	63	Charging Handle	4	Buttstock



PARTS LIST

1	Handguard	28	Pistol Grip Stamp And Nut	55	Magazine Release Button
2	Upper Receiver	29	Magazine	56	Magazine Release Button Screw
3	Lower Receiver	30	Magazine Spring	57	Magazine Release Latch Screw
4	Buttstock	31	Magazine Limiter	58	Safety Selectors
5	Bolt Carrier	32	Magazine Cap	59	Safety Selector Screws
6	Barrel	33	Magazine Magazine Follower	60	Safety Pin
7	Barrel Shroud	34	Magazine Latch Spring	61	Trigger
8	Barrel Shroud Metal Stamp	35	Magazine Latch Pin	62	Trigger Pin
9	Front Sight	36	Magazine Latch	63	Charging Handle
10	Rear Sight	37	Extraction Spring	64	Front Receiver Pin
11	Bolt Buffer Piece	38	Gas Block Snap Rings	65	Rear Receiver Pin
12	Ambidextrous Bolt Release Button	39	Gas Block Cap	66	Front Receiver Pin Spring
13	Bolt Release Button Pin	40	Gas Block	67	Rear Receiver Pin Spring
14	Bolt Release Button Spring	41	Piston	68	Buttstock Bottom Cap Pin
15	Buttstock Port And Screws	42	Barrel Nut	69	Hammer Pin
16	Recoil Pad	43	Barrel Cap	70	Hammer Spring
17	Recoil Pad Screws	44	Bolt	71	Hammer Pin Bearing
18	Buttstock Bottom Cap	45	Firing Pin	72	Hammer
19	Buffer Tube	46	Locking Lug	73	Sear
20	Buffer Tube Plastic Stamp	47	Extractor	74	Sear Pin
21	Buffer Tube Metal Stamp	48	Firing Pin Spring	75	Trigger Spring
22	Buffer Tube Stabilizer Nut	49	Charging Handle Ball Spring	76	Safety Stabilizer Pin
23	Buffer Tube Centering Stamp	50	Extractor Spring	77	Bolt Follower Block
24	Buffer Tube Centering Nut	51	Extractor Pin	78	Buffer Bolt Piece Screw
25	Pistol Grip	52	Firing Pin Retainer Pin	79	1 Full Choke
26	Pistol Grip Bottom Cap	53	Magazine Release Latch	80	III Modified Choke
27	Pistol Grip Cap Remover	54	Magazine Release Latch Spring	81	Cylinder Choke

SHOTGUN DISASSEMBLY INSTRUCTIONS

MANUFACTURERS WARNING: THIS MANUFACTURED FIREARM WAS DESIGNED TO PERFORM WITH ITS ORIGINAL PARTS. IT IS YOUR RESPONSIBILITY TO MAKE SURE THAT ANY PARTS YOU BUY ARE AUTHENTIC AND CORRECTLY INSTALLED AND THAT THE PARTS HAVE NOT BEEN ALTERED OR CHANGED. IT IS IMPERATIVE THAT ONLY FACTORY PARTS BE USED AS REPLACEMENTS TO ASSURE THAT THE FIREARM REMAINS FUNCTIONALLY SAFE AND OPERATES ACCURATELY. THE GUN OWNER ACCEPTS FULL RESPONSIBILITY FOR THE CORRECT REASSEMBLY AND FUNCTIONING OF THE FIREARM AFTER ANY DISASSEMBLY OR REPLACEMENT OF PARTS.

IMPORTANT WARNING: BEFORE YOU BEGIN ANY DISASSEMBLY ALWAYS

- 1) POINT THE SHOTGUN IN A SAFE DIRECTION.
- 2) BE SURE THAT YOU REMOVE THE MAGAZINE FROM THE FIREARM.
- 3) VISUALLY AND MANUALLY INSPECT THE CHAMBER TO CONFIRM THAT IT IS EMPTY.

IMPORTANT WARNING

Before you disassemble or clean your firearm, it is your responsibility to check that it is unloaded in safe manner.

1. First of all, put your firearm to safety first to prevent any accidents that may occur.
2. Press the magazine release button to detach your magazine.

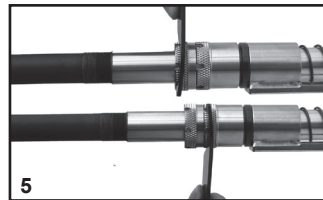




3. Unscrew the barrel shroud by turning it counterclockwise.



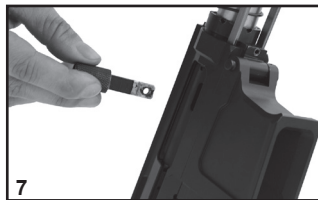
4. Pull the handguard away from the receiver to separate it from the firearm.



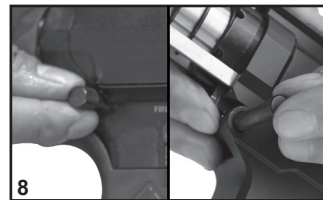
5. Take the gas block out by turning the gas chamber Lock Nut and the gas block nut clockwise and counterclockwise.



6. Take the gas block snap rings out.



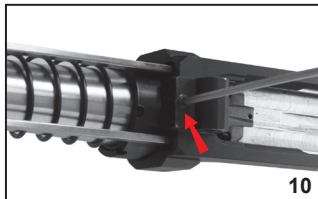
7. Pull the charging handle out.



8. Pull the two pivot pins that are holding the lower and upper receiver together.



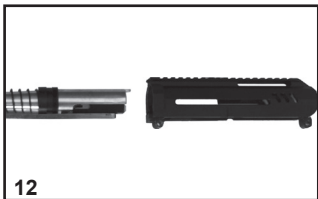
9. Detach the receivers before detaching the barrel from the upper receiver.



10. Unscrew the barrel nut locking screw.



11. Take out the barrel nut by turning it counterclockwise. Be careful not to damage the threads while assembling and disassembling the barrel.



12. Pull the barrel forward to detach it from the upper receiver.



13. In order to take the buttstock out, you need to unscrew the two screws from the recoil pad.



14. After that, you should unscrew the buttstock from the inside and take out the metal and plastic pieces.

IMPORTANT WARNING: BEFORE YOU START CLEANING YOUR SHOTGUN ALWAYS MAKE SURE IT IS UNLOADED AND POINTED IN A SAFE DIRECTION.

LUBRICATION WARNING: FIRING A SHOTGUN WITH OIL, GREASE, OR OTHER DEBRIS PARTIALLY OBSTRUCTING THE BORE MAY RESULT IN DAMAGE TO THE FIREARM OR INJURY TO THE SHOOTER AND THOSE NEARBY BEFORE FIRING MAKE SURE THE BORE AND CHAMBER OF THE BARREL IS UNOBSTRUCTED AND DRY NEVER SPRAY OR APPLY LUBRICANT ON SHOTSHELLS. FIRING ANOTHER SHOTSHELL BEHIND AN OBSTRUCTION MAY DAMAGE THE SHOTGUN AND CAUSE DEATH OR INJURY. ONLY USE LUBRICANTS PROPERLY AND SPARINGLY. YOU ARE RESPONSIBLE FOR THE PROPER CARE AND MAINTENANCE OF YOUR SHOTGUN

MAINTENANCE

STEP 1) DISASSEMBLE YOUR SHOTGUN.

STEP 2) USING A PROPER CLEANING ROD, RUN A SOLVENT-WETTED PATCH THROUGH THE BORE SEVERAL TIMES. THIS WILL THEN BE FOLLOWED BY RUNNIN DRY PATCHES THROUGH THE BORE TO REMOVE ANY DEBRIS OR RESIDUE.

STEP 3) IF THE BORE IS LEADED TO THE EXTENT THAT THE ABOVEPATCH CLEANING PROCEDURE DID NOT REMOVE THE LEAD, THEN SCRUB THE BORE FULL LENGTH WITH A SOLVENT-WETTED BRASS BRISTLE BRUSH. WHEN THE LEADINGS LOOSE THEN REPEAT STEP #2.

STEP 4) THE SURFACES OF BOLT CARRIER, EJECTOR AND INSIDE SURFACES OF THE RECEIVER SHOULD BE COATED VERY LIGHTLY WITH NON-PENETRATING LUBRICATING OIL.

STEP 5) RESSEMBLE THE SHOTGUN AND WIPE THE EXTERIOR METAL SURFACES SPARINGLY WITH AN OILED CLOTH, SWAB THE BORE WITH AN OILY PATCH BEFORE STORING THE FIREARM.

STEP 6) PLACE THE SHOTGUN IN A SAFE, LOCKED STORAGE SPACE WHERE UNAUTHORIZED PERSONS CANNOT ACCESS THE FIREARM. NEVER STORE THE SHOTGUN IN A LEATHER CASE AS LEATHER ATTRACTS.

CERTIFICATE OF WARRANTY

WARRANTY CONDITIONS

This certificate covers our firearms and it is parts. U235 Armory offers 2 years Warranty on our products for their intended purpose. Like any product, alterations made by any unqualified person or standard wearings are excluded. If you made any customizations and alterations without permission from U235 Armory will cause a void in the Warranty.

The originality, defect-free manufacturing, and craftsmanship of this product are warranted by U235 Armory agrees to fix any defects in the firearm for the original owner by repair, adjustment, or replacement, at U235 Armory option, however, that the firearm is returned unloaded and the freight prepaid.

This Warranty is void if the firearm has been used outside of the manufacturer's instructions, damaged by accident or on purpose, fired with an obstruction in the barrel, or damaged due to insufficient maintenance has been performed on the firearm.

This Warranty covers the firearm's parts to be repaired, adjusted, or replaced exclusively for the original purchaser, which right is not transferable. This Warranty does not apply to any accessory items attached or added to the firearm.

In no consequence shall U235 Armory be liable for any incidental or consequential damages happened that are covered or not in this Warranty. If Warranty service is needed, please contact your source of purchase to contact U235 Armory from info@u235armory.com

RETURN WITHOUT REPAIR

If we receive your firearm and determine that is damage is not covered under warranty, we will contact you with an explanation and an estimate of your cost for us to repair or refurbish it. If you prefer, we will return your firearm to you.

FREE REPAIR AND RETURN

If your firearm is defective and we determine the defecet is covered under warranty, U235 Armory will repair or replace the firearm. After the repair of your firearm, who will ship it directly back to you, provided you originally shipped it to us from your adress.

LIMITATIONS ON WARRANTY

Our only responsibility in the case of breach of warranty is repair. U235 Armory shall not be liable for any other damages. This includes inderect or consequential damages.

PLEASE NOTE: This warranty gives you specific legal rights, and you may also have other rights, which vary from state to state, as some jurisdictions do not allow limitations on certain damages and warranties.



NEW FEATURES OF YOUR DEFENCEPORT SHOTGUN

1. U235 GAS EJECTING PISTON SYSTEM

Your U235 has a new gas piston system that ejects the surplus gas energy that heavier loads create. The gas ejection port on top of the piston has a strong spring that will only mobilize with the energy of heavy loads such as 50 gr magnum shells. This design is patented and owned by U235. It is designed to provide time and convenience when using your U235 shotgun so that you don't have to disassemble and replace your low-velocity piston with a high-velocity piston or vice versa.

2. AMBIDEXTROUS BOLT RELEASE BUTTON

U235 M22 has bolt release controls on both sides of the firearm. On the left side, there is the standard bolt release button and on the right side, M22 has a new design bolt release button. The optimal way of using this new design is when you use your charging handle on the right, you can release your bolt, and the handle won't strike your hand.

3. BARREL NUT LOCK

One of the most common malfunctions that occur when shooting is your barrel nut getting loose. With this new design, we placed a screw that will sit on top of the barrel nut and prevents it to get loose easily.

4. BOLT BUFFER TECHNOLOGY

Your U235 has a bolt stopper placed inside the upper receiver to prevent the bolt from striking the receiver and spoiling the integrity of your upper receiver.

5. MIL-SPEC BUFFER TUBE

This model has a buffer tube that is manufactured by the military specification to be compatible with our buttstock or the buttstock of your preference.

6. BUTTSTOCK PORT

In your M22 shotgun, you have a covered empty port where you can store your earbuds, shells, chokes, choke key or whatever you can fit in there.

7. FUNCTIONING M-LOK CHANNELS

The M-LOK channels on your handguards are fully functioning in this model, so you can customize your shotgun however you like.

SERVICE NOTES

This image shows a blank sheet of white paper with horizontal dotted lines. The lines are evenly spaced and run across the width of the page, providing a guide for handwriting or typing. There are no margins, text, or other markings on the paper.

SERVICE NOTES

[illegible]

DES PLAINES, IL
info@u235armory.com